

Tue.

Altus.

Agnus

donat nobis

pacem

Mercules dux Ferrarie.



Kyrie

Terce

Christe

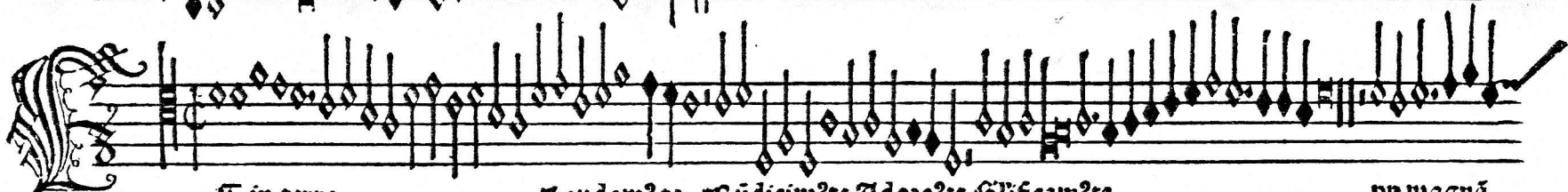
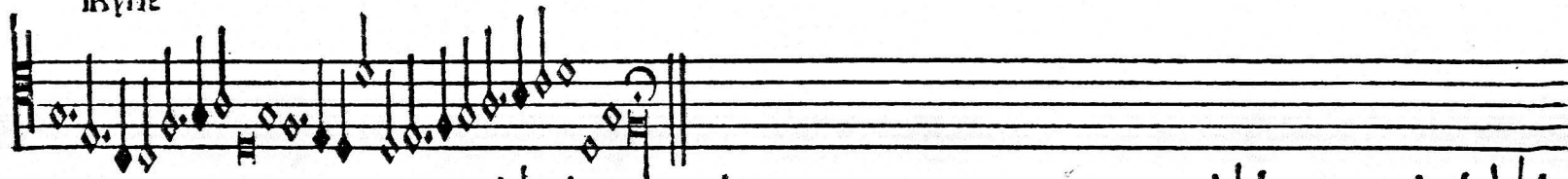
Ad iii

Altus.

Mercurus.



Kyrie



E in terra

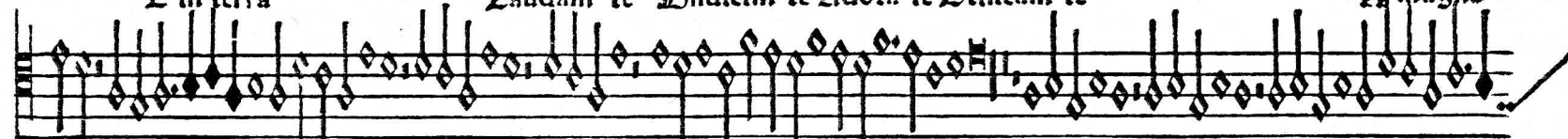
Laudam⁹ te

Benedicim⁹ te

Adora⁹ te

Glorificam⁹ te

per magnā



Dñe de⁹

de⁹ p^r

Dñe fili

Dñe de⁹

fili⁹



p^ris

Qui

tollis

miserere.

Suscipe

Qui sedes ad dex



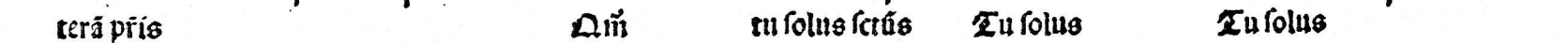
terā p^ris

Qm̄

tu solus scr̄s

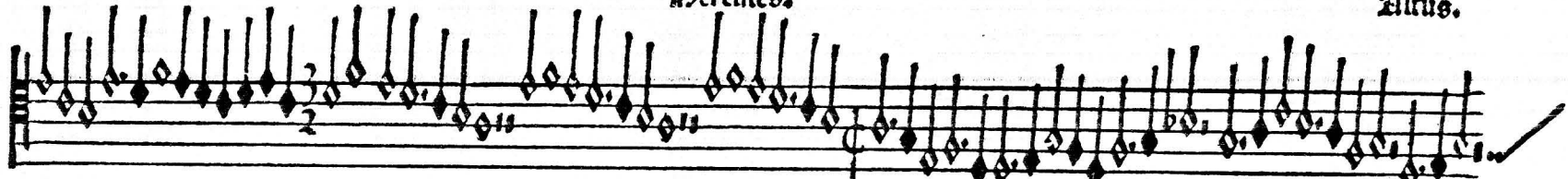
Tu solus

Tu solus



Hercules.

Altus.



Jesu christe Cū scō dei p̄f̄s Amen



atrē factozē visibiliū



z̄ invisibiliū Et in vnū Et ex p̄f̄e



aī oīa Deū de deo lumē Genitū



p̄ quē oīa Qui pp̄ nos z̄ pp̄ n̄fam

Uerte

Altus.

Mercules.

de ce lis Et incarnatus ex ma
ria ⁊ homo Crucifixus sub' pontio passus Et resurrexit
Et ascendit sedet cū glia viuos cuius regni
Et i spūi scūm qui ex patre Qui cū pte
⁊ cū glificatur q loquutus q loquutus ⁊ vnā scūm ⁊
apostolicā Confiteor: In remissionē Et expecto

Hercules.

Alrus.

Musical staff with notes and stems, corresponding to the text 'Hercules.' and 'Alrus.'

Et vitā venturi

amen

Musical staff with a large decorative initial 'S' and notes, corresponding to the text 'Et vitā venturi' and 'amen'

Ancrus

Musical staff with notes and stems, corresponding to the text 'Ancrus'

Pleni

sunt

celi

Musical staff with notes and stems, corresponding to the text 'Pleni sunt celi'

Musical staff with notes and stems, continuing the musical line

Osanna

Musical staff with notes and stems, corresponding to the text 'Osanna'

Terre

Altus.

Mercurius.

Duo

Benedic

Qui venit Tacet

In nomine Tacet

Osanna ut supra

rus

Sonus dei

Hercules.

Altus.

A musical staff for the voice of Hercules, featuring a treble clef and a C-clef. The notation consists of a series of eighth and sixteenth notes, with some rests and a fermata over a note. The staff ends with a double bar line and a repeat sign.

Agnus dei

A musical staff for the voice of Agnus dei, featuring a treble clef and a C-clef. The notation consists of a series of eighth and sixteenth notes, with some rests and a fermata over a note. The staff ends with a double bar line and a repeat sign.

A musical staff for the voice of Agnus dei, featuring a treble clef and a C-clef. The notation consists of a series of eighth and sixteenth notes, with some rests and a fermata over a note. The staff ends with a double bar line and a repeat sign.

Agnus dei

A musical staff for the voice of Agnus dei, featuring a treble clef and a C-clef. The notation consists of a series of eighth and sixteenth notes, with some rests and a fermata over a note. The staff ends with a double bar line and a repeat sign.

A musical staff for the voice of Agnus dei, featuring a treble clef and a C-clef. The notation consists of a series of eighth and sixteenth notes, with some rests and a fermata over a note. The staff ends with a double bar line and a repeat sign.

dona nobis pacem

Three empty musical staves at the bottom of the page, consisting of five lines each.