

A large, ornate decorated initial 'L' in blue, red, and gold, spanning across ten musical staves. The initial is filled with intricate floral and scrollwork patterns. The musical notation consists of black square notes on red four-line staves.

le
lu ya

Handwritten musical score on a single page. The page features a large, ornate initial letter 'D' on the left side, decorated with intricate blue, red, and gold patterns. The musical notation consists of square neumes on red four-line staves. The text 'D' is written in a large, decorative font at the beginning of the first staff. The text 'su' is written in a smaller, simple font at the end of the sixth staff. The page is numbered '18' in the top right corner.

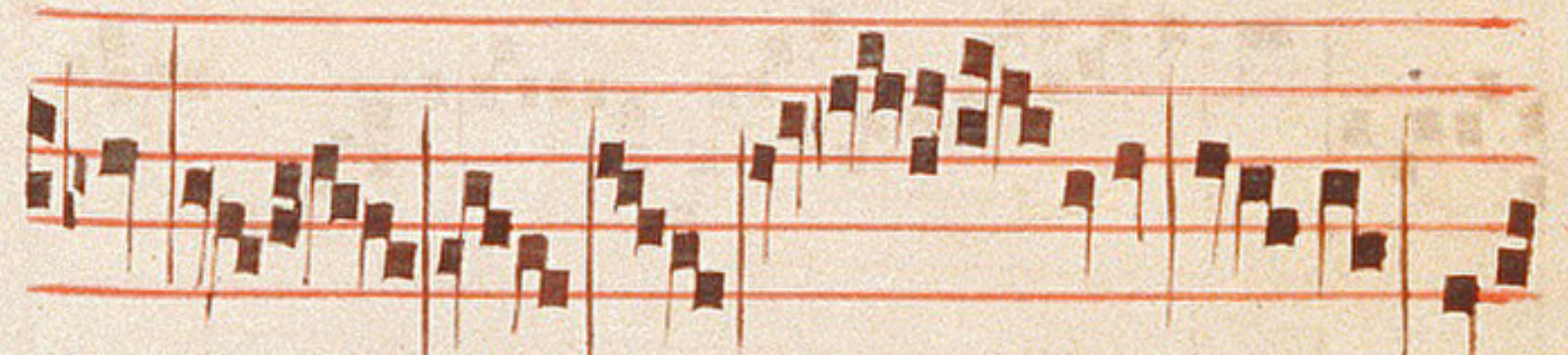
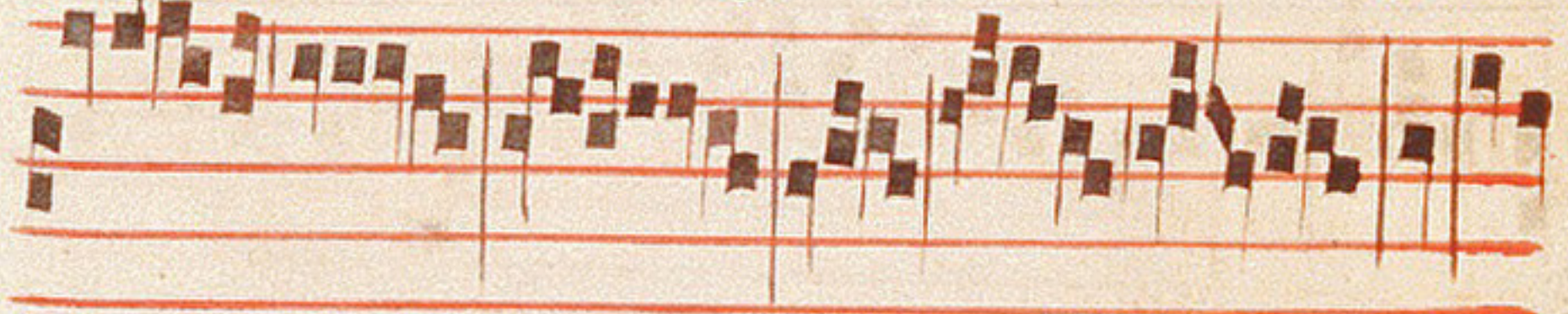
Handwritten musical score on a single page. The page features a large, ornate initial letter 'D' on the left side, decorated with intricate blue, red, and gold patterns. The musical notation consists of square neumes on red four-line staves. The text 'D' is written in a large, decorative font at the beginning of the first staff. The text 'su' is written in a smaller, simple font at the end of the sixth staff. The page is numbered '18' in the top right corner.

Handwritten musical score on a single page. The page features a large, ornate initial letter 'D' on the left side, decorated with intricate blue, red, and gold patterns. The musical notation consists of square neumes on red four-line staves. The text 'D' is written in a large, decorative font at the beginning of the first staff. The text 'su' is written in a smaller, simple font at the end of the sixth staff. The page is numbered '18' in the top right corner.

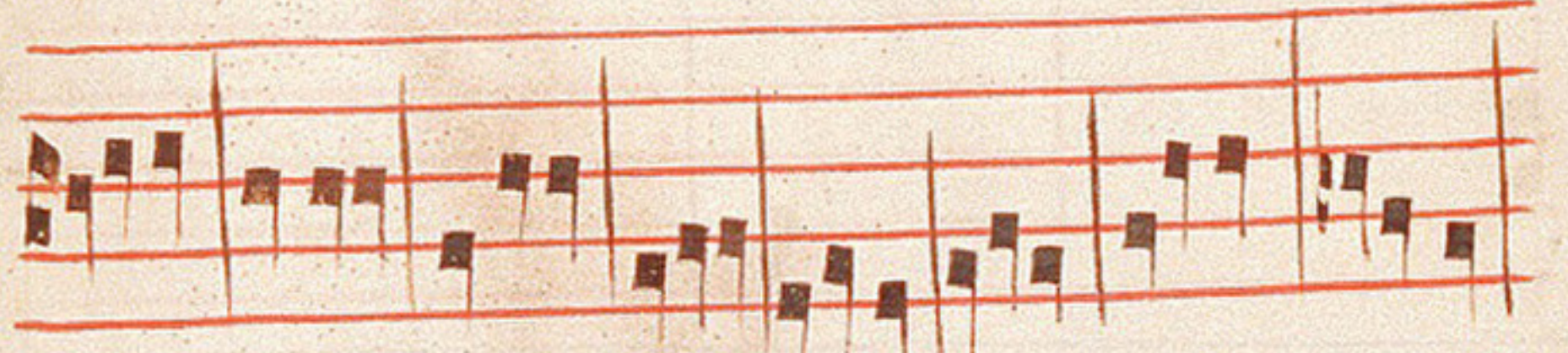
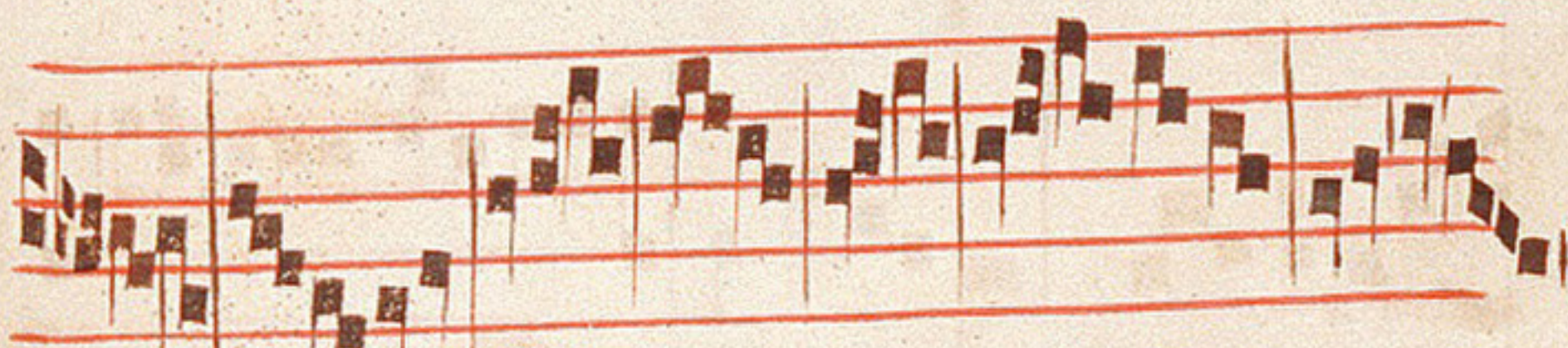
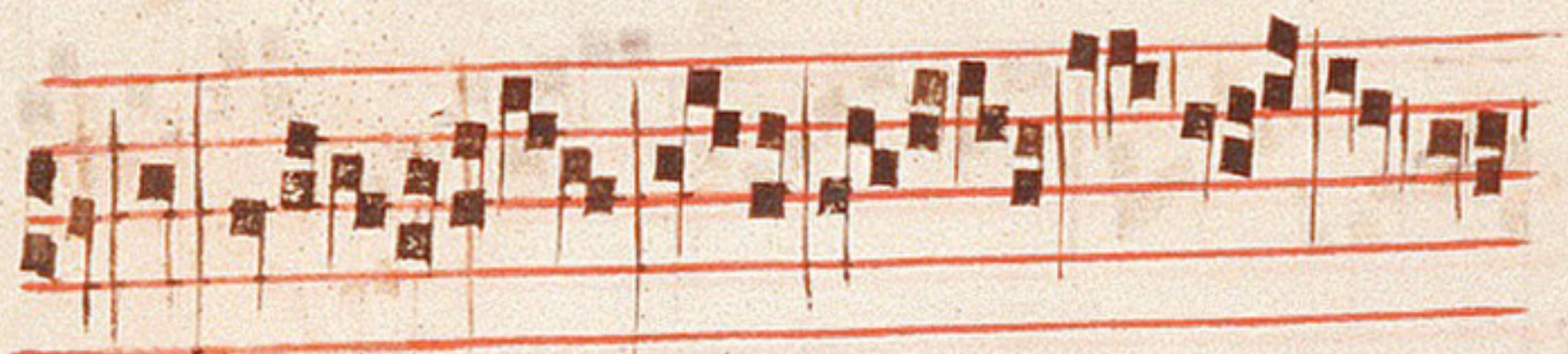
Handwritten musical score on a single page. The page features a large, ornate initial letter 'D' on the left side, decorated with intricate blue, red, and gold patterns. The musical notation consists of square neumes on red four-line staves. The text 'D' is written in a large, decorative font at the beginning of the first staff. The text 'su' is written in a smaller, simple font at the end of the sixth staff. The page is numbered '18' in the top right corner.



terroren tem et ex al



ta



ve



lee



Tum

b

A ce qu'on dit bien maort que nus na
 iore ne confort d'amois si nen a deport ou so
 las ou garison proue lai maint iour qu'onqs
 ni trouai confort i ades a son acort ai este to
 te ma vie fort laieus plus que mort qnt
 ni truis ai de.

B ele aelis par matin se leua en vn

B ele sans orguel i ioune sans folie gen
 tas cuers de grant valor i gent cors de grant
 atour laque de saison quelle regart apus
 descremie plein de promesse d'amois mi font a
 mer menemie he dice verrai ie ta le ior que
 laie en ma baillie.

A ro haro te la uot la la tiens dit mot
 los filius eius.

